

# SERVICE MANUAL

---

COLOR TELEVISION

---

- This Service Manual contains information about the difference between TV-A1416 (SHRJS4P) and TV-A1416 (SHRJ4NP).  
If requiring other information, see Service Manual of TV-A1416 (SHJ4NP,SHRJ4NP),  
(S/M Code No. 09-97C-232-6FE).

# SPECIFICATIONS

**Category :** Color television

**Broadcasting color system :**

PAL (B/G, H, I, D/K), SECAM (B/G, I, D/K, K1), NTSC (M)

**Television color system (Video input) :**

PAL, SECAM, NTSC<sup>3.58</sup>, NTSC<sup>4.43</sup>

**AERIAL & CABLE CHANNEL**

BAND	CHANNEL
VHF	E2- E12 (WEST EUROPE)
	R1-R12 (EAST EUROPE)
	1-12 (CHINA CH)
	1A-11 (INDONESIA CH)
	1-9 (IVRY COAST CH)
UHF	4-13 (SOUTH AFRICA CH)
	1-12 (JAPAN CH)
	13-57 (CHINA CH)
	21-69 (EUROPE CH)
	13-57 (CHINA CH)
UHF	13-62 (JAPAN CH)
	14-96 (U.S. CH)

**CABLE CHANNEL**

BAND	CHANNEL
VHF	S1-S41 (HYPER/OSCAR)
	Z1-Z37 (CHINA CABLE CH)
	C13-C63 (JAPAN CABLE CH)
	1-64, 95-99 (US. CABLE CH)
UHF	65-94, 100-125 (US. CABLE CH)

**Aerial Input :** 75 ohms, unbalanced

**Picture Tube :** 14"

**Screen size :** 280(W) x 335(D) x 211(H)mm  
(11<sup>1</sup>/<sub>8</sub> x 13<sup>1</sup>/<sub>4</sub> x 8<sup>3</sup>/<sub>8</sub> in.)

**Video Input/Output :** 1 Vp-p, 75 ohms

**Audio Input :** -8 dBs more than 33 kohms

**Audio Output :** -8 dBs less than 2.2 kohms  
Load IMP : 8 ohms

**Speaker :** 110 x 45 mm (4<sup>3</sup>/<sub>8</sub> x 1<sup>13</sup>/<sub>16</sub> in.) oval : 2  
25 mm (1 in.) round : 2

**Operating Voltage :** 110 – 240 VAC, 50/60 Hz

**Power Consumption :** 80 W

**Phones jack :** Stereo-mini jack

**Operating temperature :** 5°C – 40°C

**Operating humidity :** 35% – 80%

**Dimensions :** 440(W) x 371(D) x 320(H)mm  
(17<sup>3</sup>/<sub>8</sub> x 14<sup>5</sup>/<sub>8</sub> x 12<sup>5</sup>/<sub>8</sub> in.)

**Weight :** 10.5 kg (23.1 lbs.)

- Design and specifications are subject to change without notice.

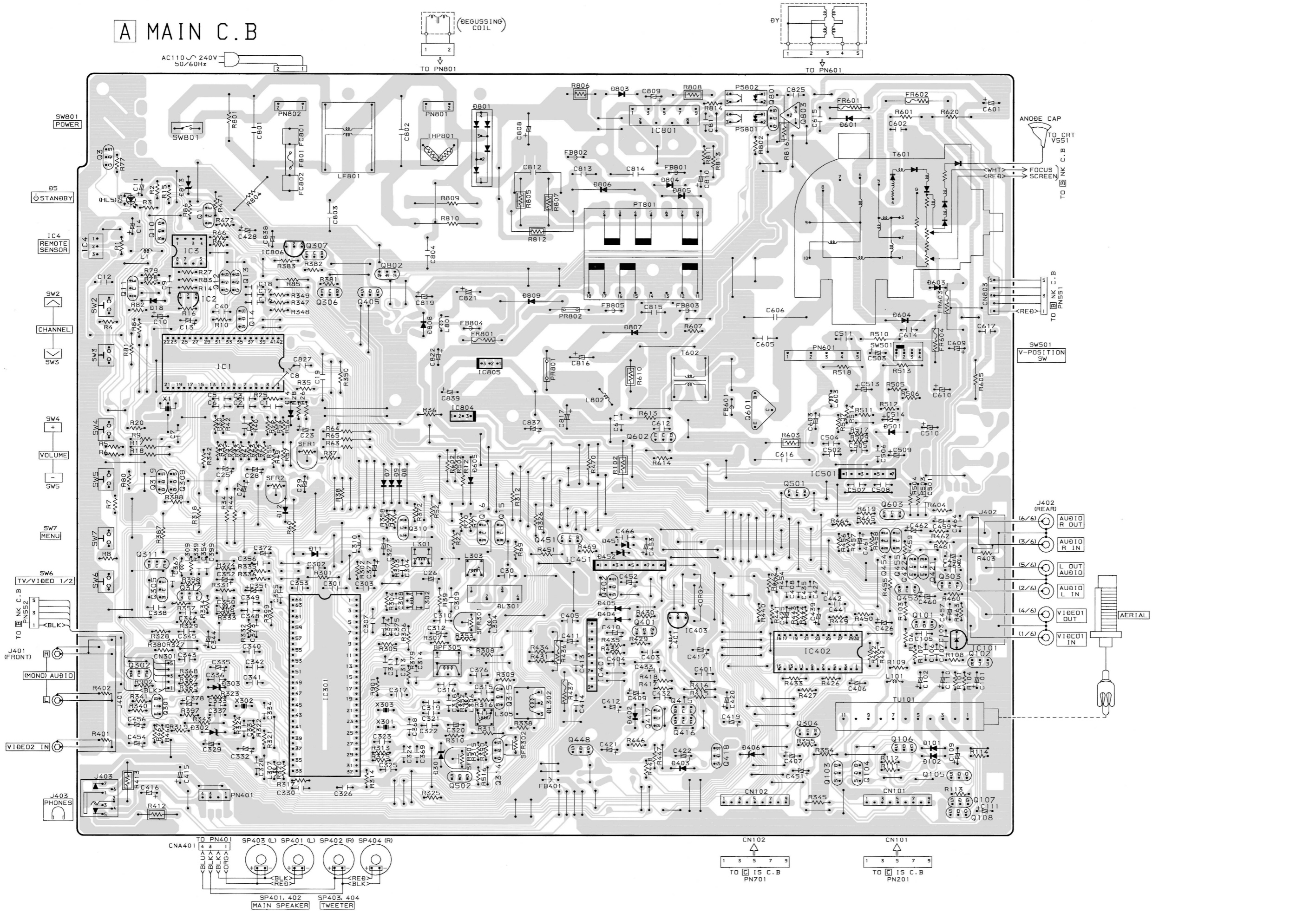
# ELECTRICAL MAIN PARTS LIST

REF. NO.	PART NO.	KANRI NO.	DESCRIPTION	REF. NO.	PART NO.	KANRI NO.	DESCRIPTION
IC				C26	87-010-404-080		CAP,E 4.7-50 M 11L SME
	86-LB4-621-010		IC,M37220M3-160SP	C27	87-010-401-080		CAP,E 1-50 M 11L SME
	87-A20-611-080		IC,M51943BSL-700A	C28	87-010-404-080		CAP,E 4.7-50 M 11L SME
	87-A21-062-010		IC,M24C02-BN6	C29	87-010-404-080		CAP,E 4.7-50 M 11L SME
	87-A20-371-080		IC,KA33V	C30	87-018-134-080		CAPACITOR,TC-U 0.01-16
	87-A20-436-010		IC,LA7565N	C40	87-018-131-080		CAP, CER 1000P-50V
	87-027-656-010		IC,TC4066BP	C101	87-010-401-080		CAP,E 1-50 M 11L SME
	87-070-080-010		IC,TA8759BN	C102	87-010-263-080		CAP,E 100-10 M 11L SME
	87-A20-734-010		IC,TDA2007A	C103	87-A10-207-080		CAP,TCS 0.01-50KBUP050
	87-002-577-010		IC,LA7953N	C109	87-010-400-080		CAP,E 0.47-50 M 11L SME
	87-001-647-080		IC,NJM78L12A	C110	87-010-400-080		CAP,E 0.47-50 M 11L SME
	87-002-779-010		IC,LA7956	C111	87-010-401-080		CAP,E 1-50 M 11L SME
	87-070-237-010		IC,LA7832	C301	87-018-122-080		CAP 180P-50 B
△	87-A20-980-010		IC,STR-S6707N	C302	87-018-122-080		CAP 180P-50 B
	87-001-576-010		IC,MJM7812FA	C303	87-018-122-080		CAP 180P-50 B
	87-A20-389-010		IC,NJM7809FA	C307	87-018-209-080		CAP, CER 0.1-50V
	87-020-881-080		IC,NJM78L05A	C309	87-018-134-080		CAPACITOR,TC-U 0.01-16
	87-A90-111-010		RCR UNIT,GPIU281Y	C310	87-018-134-080		CAPACITOR,TC-U 0.01-16
				C311	87-018-134-080		CAPACITOR,TC-U 0.01-16
				C312	87-010-400-080		CAP,E 0.47-50 M 11L SME
TRANSISTOR				C313	87-018-134-080		CAPACITOR,TC-U 0.01-16
	87-A30-066-080		TR,2SA1175FE	C314	87-018-122-080		CAP 180P-50 B
	87-A30-090-080		FET,2SK2541	C315	87-018-107-080		CAP,TC-U 18P-50 SL
	87-A30-065-080		TR,2SC2785FE	C316	87-018-131-080		CAP, CER 1000P-50V
	87-A30-091-080		FET,2SJ460	C320	87-010-529-080		CAP,E 1-50 BP
	87-A30-121-080		TR,DTC 323 TS	C327	87-010-260-080		CAP,E 47-25 M 11L SME
	87-A30-051-010		TR,2SD2331	C328	87-018-130-080		CAP,TC-U 820P-50 B
	87-026-293-080		TR,DTC144WS	C329	87-010-401-080		CAP,E 1-50 M 11L SME
	89-334-674-580		TR,2SC3467 D/E	C330	87-018-124-080		CAP, CER 270P-50V
	87-A30-041-110		TR,SE115N	C332	87-010-403-080		CAP,E 3.3-50 M 11L SME
				C335	87-010-374-080		CAP,E 47-10 M 11L SME
				C336	87-018-134-080		CAPACITOR,TC-U 0.01-16
DIODE				C338	87-018-117-080		CAP,TC-U 68P-50 SL
	87-070-345-080		DIODE,IN4148	C344	87-010-400-080		CAP,E 0.47-50 M 11L SME
	87-A40-349-080		ZENER,MTZJ7.5C	C348	87-018-134-080		CAPACITOR,TC-U 0.01-16
	87-A40-001-080		ZENER,MTZJ12C	C349	87-018-134-080		CAPACITOR,TC-U 0.01-16
	87-A40-235-080		ZENER,MTZJ9.1C	C350	87-018-120-080		CAP, CERA-SOL SS 120P
	87-A40-004-080		ZENER,MTZJ16A	C351	87-010-401-080		CAP,E 1-50 M 11L SME
	87-002-654-080		DIODE,S5566B	C352	87-010-401-080		CAP,E 1-50 M 11L SME
	87-A40-286-080		DIODE,RGP10JE-5025	C354	87-018-134-080		CAPACITOR,TC-U 0.01-16
△	87-A40-328-010		DIODE,GBU4JL	C356	87-018-122-080		CAP 180P-50 B
	87-A40-450-090		DIODE,RU 1P	C372	87-010-378-080		CAP,E 10-16 M 11L SME
	87-A40-354-090		DIODE,UF3GL-6251	C373	87-018-115-080		CAP, CER 47P-50V
	87-A40-440-080		ZENER,MTZJ7.5A	C374	87-018-134-080		CAPACITOR,TC-U 0.01-16
	87-A40-347-080		ZENER,MTZJ2.2B	C375	87-018-134-080		CAPACITOR,TC-U 0.01-16
				C376	87-018-134-080		CAPACITOR,TC-U 0.01-16
				C377	87-015-997-010		CAP,E 2200-16 M SME
MAIN C.B				C378	87-010-401-080		CAP,E 1-50 M 11L SME
BPF305	84-LB3-622-010		FLTR,BELL 2	C399	87-018-209-080		CAP, CER 0.1-50V
C1	87-018-109-080		CAP, CER 22P-50V	C401	87-018-134-080		CAPACITOR,TC-U 0.01-16
C2	87-018-109-080		CAP, CER 22P-50V	C406	87-010-405-080		CAP,E 10-50 M 11L SME
C3	87-018-109-080		CAP, CER 22P-50V	C407	87-010-405-080		CAP,E 10-50 M 11L SME
C4	87-018-109-080		CAP, CER 22P-50V	C409	87-010-260-080		CAP,E 47-25 M 11L SME
C5	87-018-109-080		CAP, CER 22P-50V	C410	87-010-248-080		CAP,E 220-10 M 11L SME
C6	87-018-109-080		CAP, CER 22P-50V	C411	87-010-248-080		CAP,E 220-10 M 11L SME
C7	87-018-123-080		CAP, CER 220P-50V	C412	87-010-396-090		CAP,E 470-35 M SME
C8	87-018-115-080		CAP, CER 47P-50V	C415	87-010-387-080		CAP,E 470-25 M SME
C9	87-018-134-080		CAPACITOR,TC-U 0.01-16	C416	87-010-387-080		CAP,E 470-25 M SME
C10	87-010-101-080		CAP,E 220-16 M SME	C417	87-010-237-090		CAP,E 1000-16 M SME
C11	87-010-378-080		CAP,E 10-16 M 11L SME	C419	87-010-401-080		CAP,E 1-50 M 11L SME
C12	87-018-119-080		CAP, CER 100P-50V	C420	87-010-401-080		CAP,E 1-50 M 11L SME
C13	87-010-401-080		CAP,E 1-50 M 11L SME	C421	87-010-112-080		CAP,E 100-16 M 11L SME
C14	87-010-378-080		CAP,E 10-16 M 11L SME	C422	87-010-401-080		CAP,E 1-50 M 11L SME
C16	87-018-125-080		CAP, TC U 330P-50 KB	C425	87-010-378-080		CAP,E 10-16 M 11L SME
C17	87-018-119-080		CAP, CER 100P-50V	C426	87-010-378-080		CAP,E 10-16 M 11L SME
C18	87-018-119-080		CAP, CER 100P-50V	C428	87-015-695-010		CAP,E 1-50 M 7L SRA
C19	87-018-119-080		CAP, CER 100P-50V	C439	87-010-112-080		CAP,E 100-16 M 11L SME
C23	87-010-404-080		CAP,E 4.7-50 M 11L SME	C451	87-010-402-080		CAP,E 2.2-50 M 11L SME
C25	87-010-404-080		CAP,E 4.7-50 M 11L SME	C452	87-010-384-080		CAP,E 100-25 M 11L SME
				C453	87-010-401-080		CAP,E 1-50 M 11L SME

REF. NO.	PART NO.	KANRI NO.	DESCRIPTION	REF. NO.	PART NO.	KANRI NO.	DESCRIPTION
C454	87-010-401-080		CAP,E 1-50 M 11L SME	△ FC802	87-033-213-080		FUSE CLAMP,FC 51F
C456	87-010-401-080		CAP,E 1-50 M 11L SME	FR601	87-A00-063-060		RES,FUSE 2.2-1/2W J R-TYPE
C457	87-010-401-080		CAP,E 1-50 M 11L SME	FR602	87-A00-052-060		RES,FUSE 3.9-1W J R-TYPE
C458	87-010-401-080		CAP,E 1-50 M 11L SME	FR603	87-A00-050-060		RES,FUSE 2.2-1W J R-TYPE
C459	87-010-401-080		CAP,E 1-50 M 11L SME	FR604	87-A00-052-060		RES,FUSE 3.9-1W J R-TYPE
C460	87-010-221-080		CAP,E 470-10 M SME	FR801	87-A00-081-090		RES,FUSE 1-1/2W
C461	87-010-405-080		CAP,E 10-50 M 11L SME	J401	87-A60-322-110		JACK,PIN 3P Y-W-R W/SW
C462	87-010-405-080		CAP,E 10-50 M 11L SME	J402	87-A60-324-110		JACK,PIN 6P Y-W-R W/SW
C466	87-018-131-080		CAP,CER 1000P-50V	J403	87-A60-420-010		JACK,3.5 ST MSC
C501	87-018-127-080		CAP, CER 470P-50V	L1	87-003-226-080		MICRO INDUCTOR 100UJ
C502	87-018-134-080		CAPACITOR,TC-U 0.01-16	L101	87-005-481-080		COIL,47UH J FLR50
C503	87-010-405-080		CAP,E 10-50 M 11L SME	L301	84-LB3-668-010		FLTR,SECAM DET
C507	87-018-115-080		CAP,TC-U 47P-50 J SL	L302	84-LB3-668-010		FLTR,SECAM DET
C508	87-018-131-080		CAP, CER 1000P-50V	L303	82-JT2-608-010		FLTR,DL PHASE
C509	87-010-247-080		CAP,E 100-50 M SME	L304	87-003-145-080		COIL,8.2UH LAL02
C510	87-010-394-080		CAP,E 220-35 M SME	L305	82-JT2-611-010		FLTR,SECAM REF
C511	88-708-980-810		CAP,M 0.056-100 J AMZV	L306	87-003-286-080		COIL,56UH LAL02
C513	87-A10-011-090		CAP,E 2200-25 SMG	L307	87-003-154-080		COIL,220UH
C514	87-010-401-080		CAP,E 1-50 M 11L SME	L308	87-003-147-080		COIL, 22UH
C601	87-016-299-080		CAP,E 10-100 M SME	L309	87-003-286-080		COIL,56UH LAL02
C603	87-016-217-080		CAP,E 4.7-160 M SME	L310	87-005-473-080		COIL,10UH J FLR50
C605	87-012-385-010		CAP,CER 330P-2K K BN DE	L401	87-005-444-080		COIL 100UH,K
C606	87-016-490-010		CAP,M/P 8200P-1.25K PH	L603	87-A50-040-010		COIL,2.2MH
C609	87-010-386-080		CAP,E 330-25 M SME	L801	87-A50-176-080		COIL,33UH-PJ87
C610	87-010-397-090		CAP,E 1000-35 M SME	L802	87-A50-170-010		COIL,390UH RCH106
C611	87-010-976-080		CAP,CER 1000P-500 B	△ LF801	87-JB8-650-010		FLTR,LINE SS24H-K18055
C612	87-010-974-080		CAP,CER 220P-500 B	PN401	87-049-469-010		CONN,4P V
C614	87-016-515-080		CAP,CER 1000P-1K B	PN601	87-099-675-010		CONN,5P V V
C615	87-012-386-090		CAP,CER 470P-2K K BN DE	PN801	82-481-649-010		PLUG,2P MINI(*)
C616	87-016-481-010		CAP,M/P 0.47-200 J	△ PN802	87-099-674-010		CONN,2P VA V
△ C617	88-238-450-810		CERAMIC CAPACITOR,150P/500V	△ PR801	87-A90-090-080		PROTECTOR,1.5A 491SERIES 60V
△ C801	87-A10-688-090		CAP,M/P 0.22-275 K	△ PR802	87-A90-094-080		PROTECTOR,4A 491SERIES 60V
△ C802	87-A10-688-090		CAP,M/P 0.22-275 K	△ PS801	87-A30-096-010		P-TR, TLP721F
△ C803	87-012-370-010		CAP,CER 3300P-250NS	△ PS802	87-A30-096-010		P-TR, TLP721F
△ C804	87-012-370-010		CAP,CER 3300P-250NS	△ PT801	87-JBC-627-110		PT,SWT 7JB
△ C808	87-A10-646-090		CAP,E 220-400 SMH (25.4*40)	R102	87-A00-164-090		RES,M/F 12K-2W J RSF(S)
C809	87-010-385-080		CAP,E 220-25 M SME	R326	87-A00-317-080		RES,M/F 82-1/4W F SN2E
C810	87-A10-728-080		CAP,E 680-10 M LXV	R412	87-A00-150-090		RES,M/F 220-1W J RSF(S)
C811	87-018-131-080		CAP, CER 1000P-50V	R413	87-A00-150-090		RES,M/F 220-1W J RSF(S)
C812	87-A10-645-010		CAP,M/P 0.01-1K J MMH	R436	87-A00-369-090		RES,FUSE 3.3-1/2W J L-FORMING
C813	87-012-372-010		CAP,CER 1000P-2K	R437	87-A00-369-090		RES,FUSE 3.3-1/2W J L-FORMING
C814	87-A10-832-010		CAP,CER 1000P-1K K R LONG	R603	87-A00-200-090		RES,M/F 100-2W J RSF(S)
C815	87-012-397-090		CAP,CER 1000P-2K K BN DE	R610	87-A00-225-090		RES,M/F 2.2K-5W J RSV5
C816	87-A10-731-090		CAP,E 220-160 M KMF	R804	87-A00-224-090		RES,SD 8.2M-1W J CE
C817	87-016-221-090		CAP,E 100-160 M TWSS	R805	87-A00-333-090		RES,M/F 100K-3W J RSS
C819	87-010-381-080		CAP,E 330-16 M SME	R806	87-A00-287-090		RES,CEM 0.33-5W K RGC5
C821	87-010-398-090		CAP,E 2200-35 M SME	R807	87-A00-333-090		RES,M/F 100K-3W J RSS
C822	87-010-397-090		CAP,E 1000-35 M SME	R808	87-A00-243-090		RES,M/F 22-1W J RSF(S)
C825	87-A10-469-080		CAP,CER 2200P-500 K B DD10	R809	87-A00-552-010		RES,CEM 1-10W J RGC
C827	87-018-131-080		CAP, CER 1000P-50V	R810	87-A00-552-010		RES,CEM 1-10W J RGC
C837	87-010-378-080		CAP,E 10-16 M 11L SME	R812	87-A00-170-090		RES,M/F 82K-3W J RSF(S)
C838	87-010-235-080		CAP,E 470-16 SME	R816	87-A00-223-090		RES,M/F 47K-2W J RSF(S)
C839	87-010-378-080		CAP,E 10-16 M 11L SME	SFR1	87-024-438-080		SFR220K,RH063EC
CN101	87-A60-498-010		CONN,9P V BLK TAC-L09X	SFR2	87-024-437-080		SFR100K,RH063EC
CN102	87-A60-498-010		CONN,9P V BLK TAC-L09X	SFR301	87-024-429-080		SFR,1K RH063EC
CN301	84-LB2-631-010		CONN ASSY,5P TN-4	SFR302	87-024-429-080		SFR,1K RH063EC
CN803	87-JB2-690-010		CONN ASSY,5P V WHITE-RED TV-NK	SFR501	87-024-436-080		SFR,47K RH063EC
CNA401	84-LB2-632-110		CONN ASSY,4P-SP-2	SW2	87-A90-712-080		SW,TACT EVQ11L07K
D5	87-070-110-010		LED,SLP-181B-51	SW3	87-A90-712-080		SW,TACT EVQ11L07K
DL301	84-LB3-638-010		DL,ADL-CP144E	SW4	87-A90-712-080		SW,TACT EVQ11L07K
△ DL302	87-A90-370-010		DELAY LINE,ELB10Z334	SW5	87-A90-712-080		SW,TACT EVQ11L07K
FB01	87-035-458-010		FUSE,4A 250V T 218	SW6	87-A90-712-080		SW,TACT EVQ11L07K
FB401	87-003-320-080		F-BEAD,FBR07HA121NB	SW7	87-A90-712-080		SW,TACT EVQ11L07K
FB601	87-003-320-080		F-BEAD,FBR07HA121NB	SW501	87-A90-567-010		SW,LVR 4-1-3 EVQRAAL10
FB801	87-003-320-080		F-BEAD,FBR07HA121NB	△ SW801	87-A90-364-010		SW,PUSH SDDL1B-C-D-2
FB802	87-003-320-080		F-BEAD,FBR07HA121NB	△ T601	84-LB3-607-010		FBT,FTK-14B011
FB803	87-003-320-080		F-BEAD,FBR07HA121NB	△ T602	84-LB3-651-010		TRANS,HD MS-101N
FB804	87-003-320-080		F-BEAD,FBR07HA121NB	△ THP801	87-A90-759-010		POS-THMS,PTH451C272BF300N270
FB805	87-003-320-080		F-BEAD,FBR07HA121NB	TU101	86-LBB-603-010		TU UNIT, ENV59D17F1
△ FC801	87-033-213-080		FUSE CLAMP,FC 51F	X1	87-030-212-080		CERA LOCK CST8.0M

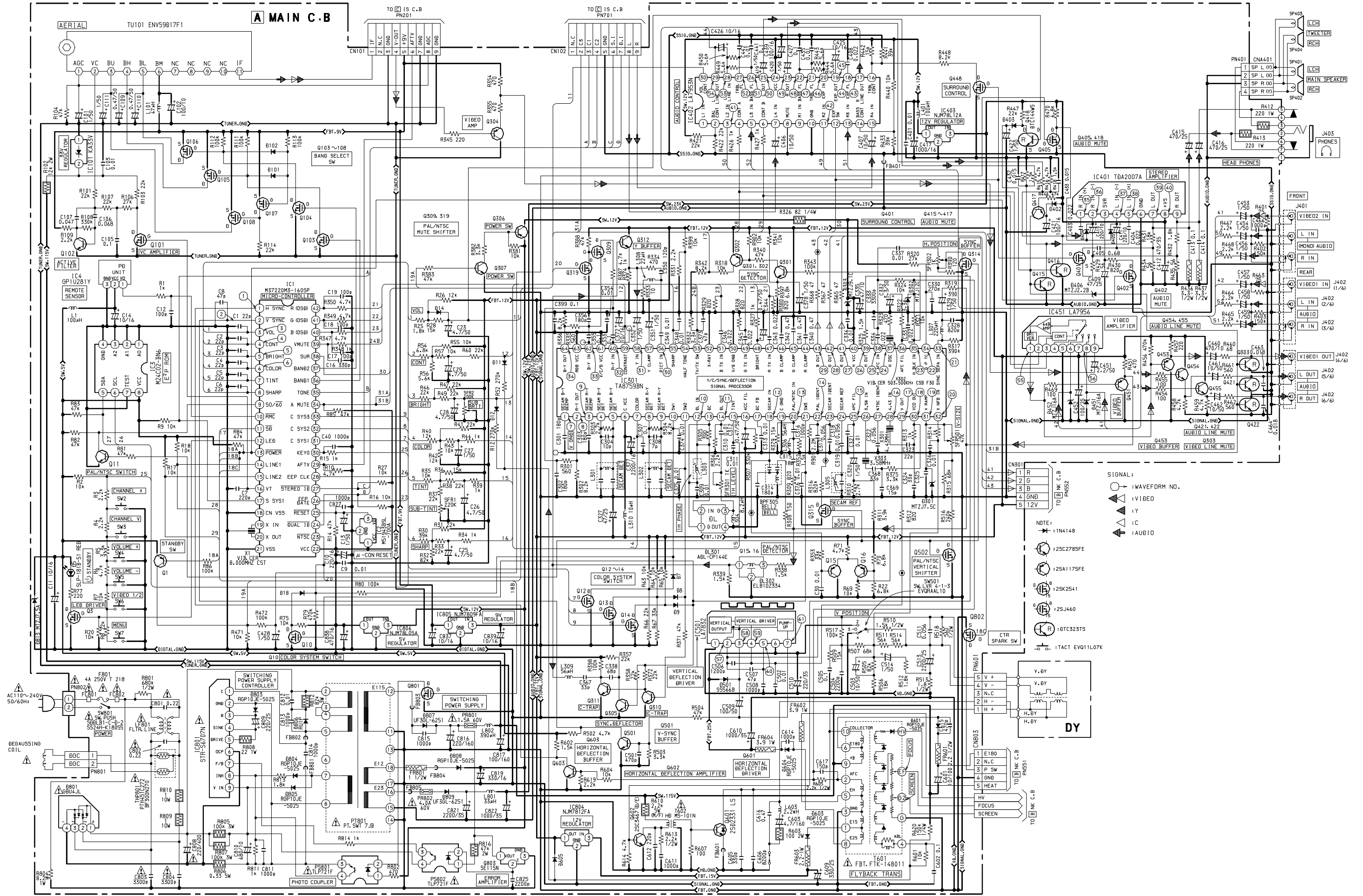
REF. NO.	PART NO.	KANRI NO.	DESCRIPTION	REF. NO.	PART NO.	KANRI NO.	DESCRIPTION
X301	87-A70-054-080		VIB,XTAL 4.43MHZ AQC-1018	C214	87-018-134-080		CAPACITOR,TC-U 0.01-16
X302	87-030-327-010		VIB,CER CSB503F30	C217	87-018-134-080		CAPACITOR,TC-U 0.01-16
X303	87-A70-007-080		VIB,XTAL 3.58MHZ AQC-1001	C218	87-018-133-080		CAPACITOR,CER 4700P-16V
				C219	87-018-134-080		CAPACITOR,TC-U 0.01-16
				C221	87-018-134-080		CAPACITOR,TC-U 0.01-16
NK C.B							
△	C551	87-010-976-080	CAP,CER 1000P-500 B	C222	87-018-120-080		CAP, CERA-SOL SS 120P
△	C552	87-012-397-010	CAP,CER 1000P-2K BN	C223	87-010-401-080		CAP,E 1-50 M 11L SME
	C553	87-018-124-080	CAP, CER 270P-50V	C225	87-018-119-080		CAP, CER 100P-50V
	C554	87-018-124-080	CAP, CER 270P-50V	C227	87-018-118-080		CAP,TC-U 82P-50 B
	C555	87-018-126-080	CAP, TC U 390P-50 KB	C228	87-010-263-080		CAP,E 100-10 M 11L SME
	C556	87-010-378-080	CAP,E 10-16 M 11L SME	CF203	87-008-574-080		FLTR,SFSH4.5MCB
	C557	87-010-378-080	CAP,E 10-16 M 11L SME	CF204	87-A90-223-080		FLTR, SFSH6.0MCB
	L551	87-005-444-080	COIL 100UH,K	CF205	87-008-578-080		FLTR,TPS6.5MB2
	PN551	87-009-195-010	CONN,5P B5BEH	CF206	87-A90-224-080		FLTR, TPS6.0MB
	PN552	87-049-590-010	CONN,5P 8283 V WHT	CF207	87-008-577-080		FLTR,TPS5.5MB2
	PN554	87-099-672-010	CONN,1P V LV GRA	CF208	84-LB3-626-080		FLTR,TPS4.5MB2
△	R551	87-A00-165-090	RES,M/F 15K-2W J RSF(S)	L202	87-003-108-080		COIL, 0.68UH K LAL02
△	R552	87-A00-165-090	RES,M/F 15K-2W J RSF(S)	L206	87-003-145-080		COIL,8.2UH LAL02
△	R553	87-A00-165-090	RES,M/F 15K-2W J RSF(S)	L207	87-003-145-080		COIL,8.2UH LAL02
	SFR551	87-024-522-080	SFR 4.7K DIA6V NTP	L208	87-003-102-080		COIL, 10UH
	SFR552	87-024-522-080	SFR 4.7K DIA6V NTP	L209	87-003-146-080		COIL,15UH
	SFR553	87-024-522-080	SFR 4.7K DIA6V NTP	L210	86-LB7-656-010		COIL,VCO2 38.0MHZ LA7565N
	SFR554	87-024-520-080	SFR,1K DIA6 V NTP	L221	87-003-102-080		COIL, 10UH
	SFR555	87-024-520-080	SFR,1K DIA6 V NTP	PN201	87-A60-499-010		CONN,9P H BLK TAC-L09P
△	S0551	86-LBU-670-010	SOCKET,CRT 9P CVT3326 1603	PN701	87-A60-499-010		CONN,9P H BLK TAC-L09P
				SFR201	87-024-434-080		SFR,22K RH063EC
				X201	87-A70-043-010		VIB,CER 503KHZ CSBE5
IS C.B							
	BPF201	87-A90-670-010	FLTR,SAW OFW-K6265K				
	C201	87-018-119-080	CAP, CER 100P-50V				
	C211	87-018-109-080	CAP, CER 22P-50V				
	C212	87-010-401-080	CAP,E 1-50 M 11L SME				
	C213	87-010-263-080	CAP,E 100-10 M 11L SME				

A MAIN C.B



A  
B  
C  
D  
E  
F  
G  
H  
I  
J  
K  
L  
M  
N  
O  
P  
Q  
R  
S  
T  
U

SCHEMATIC DIAGRAM - 1 (MAIN)



SIGNAL:  
 ○ : WAVEFORM NO.  
 ▲ : VIDEO  
 △ : C  
 ◀ : AUDIO

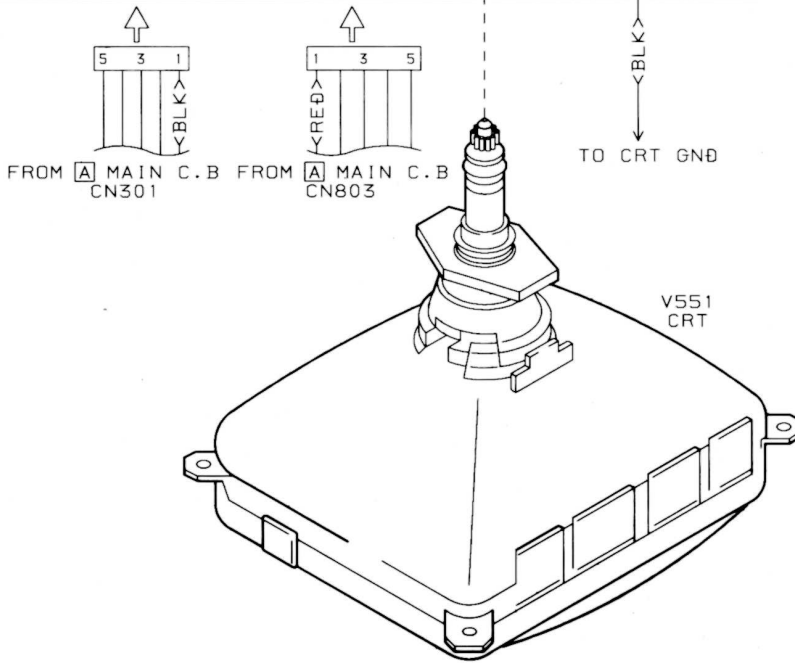
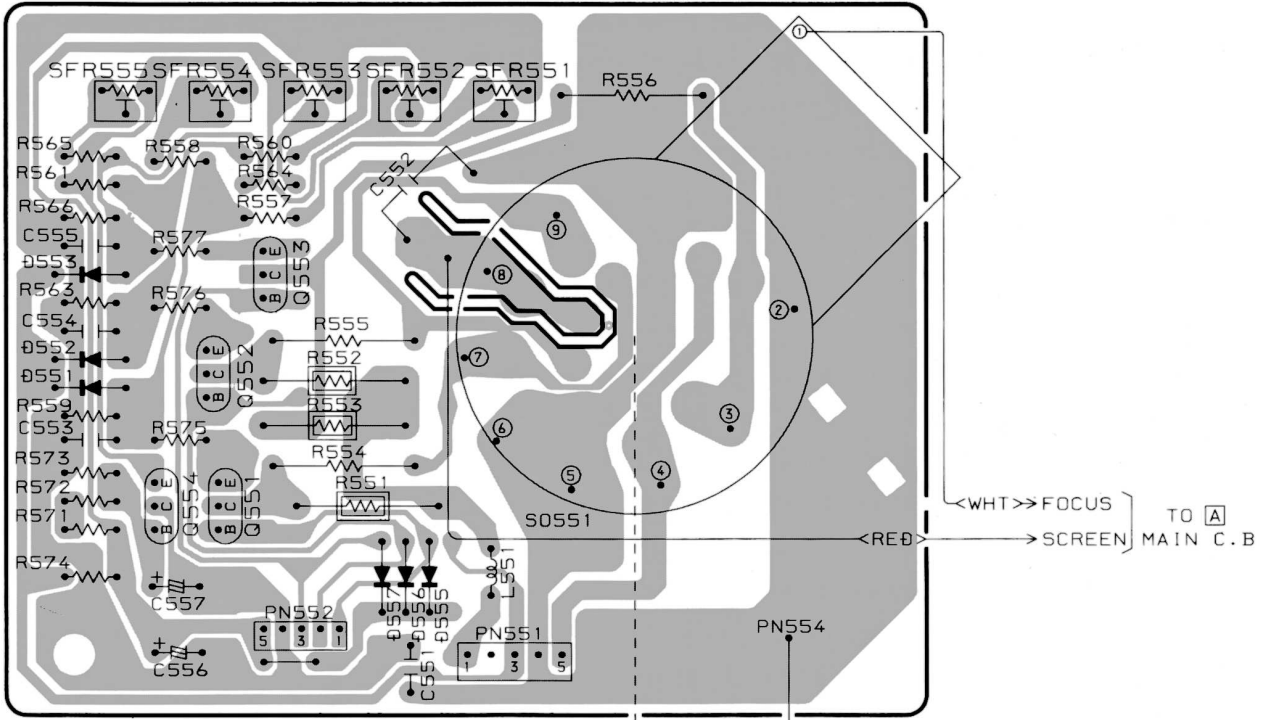
NOTE:  
 ○ : 1N4148  
 ○ : 25C2785FE  
 ○ : 25A1175FE  
 ○ : 25K2541  
 ○ : 25J460  
 ○ : 0TC323TS  
 ○ : TACT EV0110L7K

WIRING - 2 (NK)

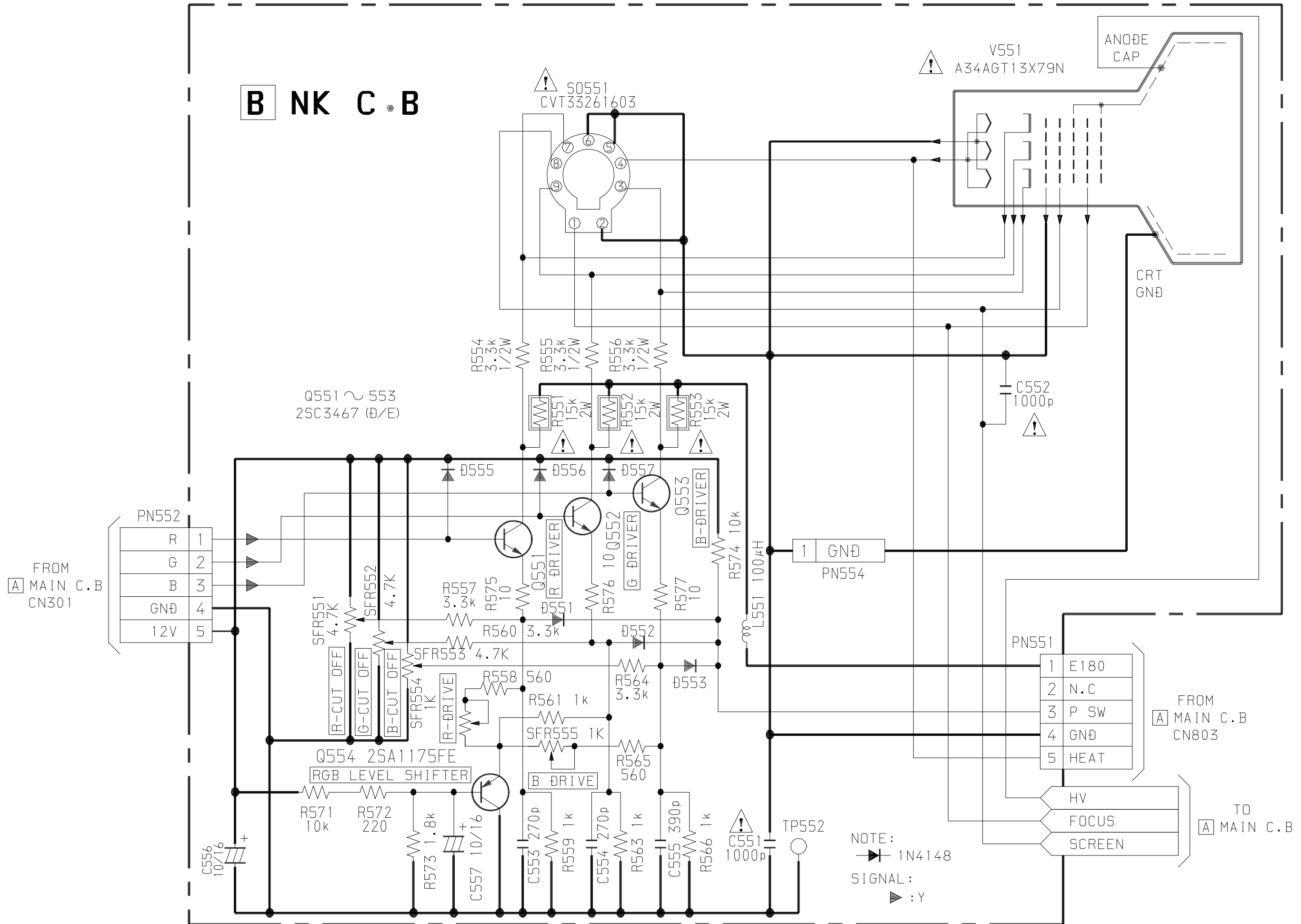
15	14	13	12	11	10	9	8	7	6	5	4	3	2	1
----	----	----	----	----	----	---	---	---	---	---	---	---	---	---

A
B
C
D
E
F
G
H
I
J
K
L
M
N
O
P
Q
R
S
T
U

**B** NK C. B



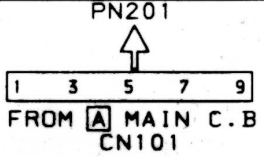
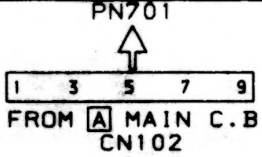
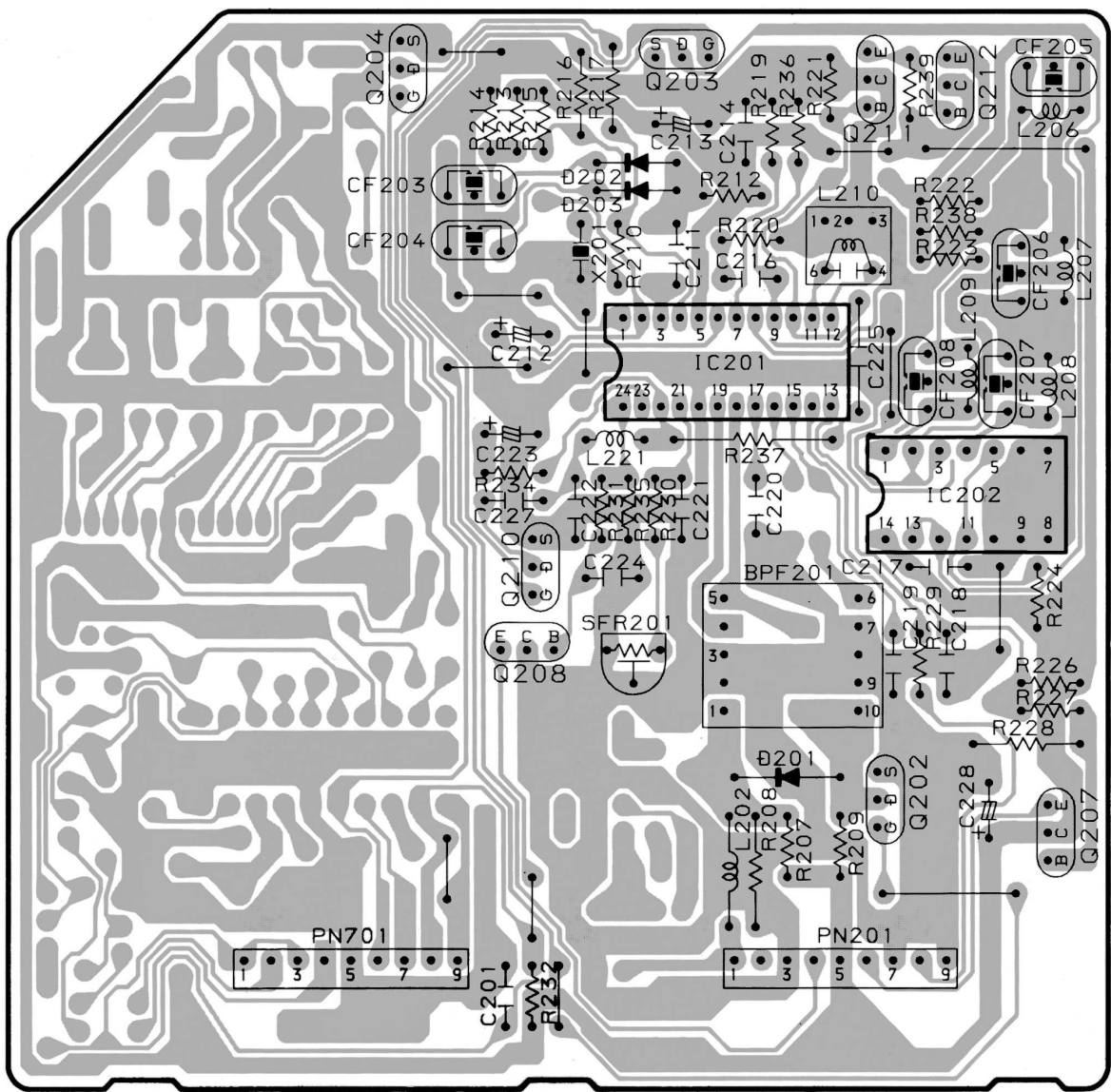




WIRING - 3 (IS)

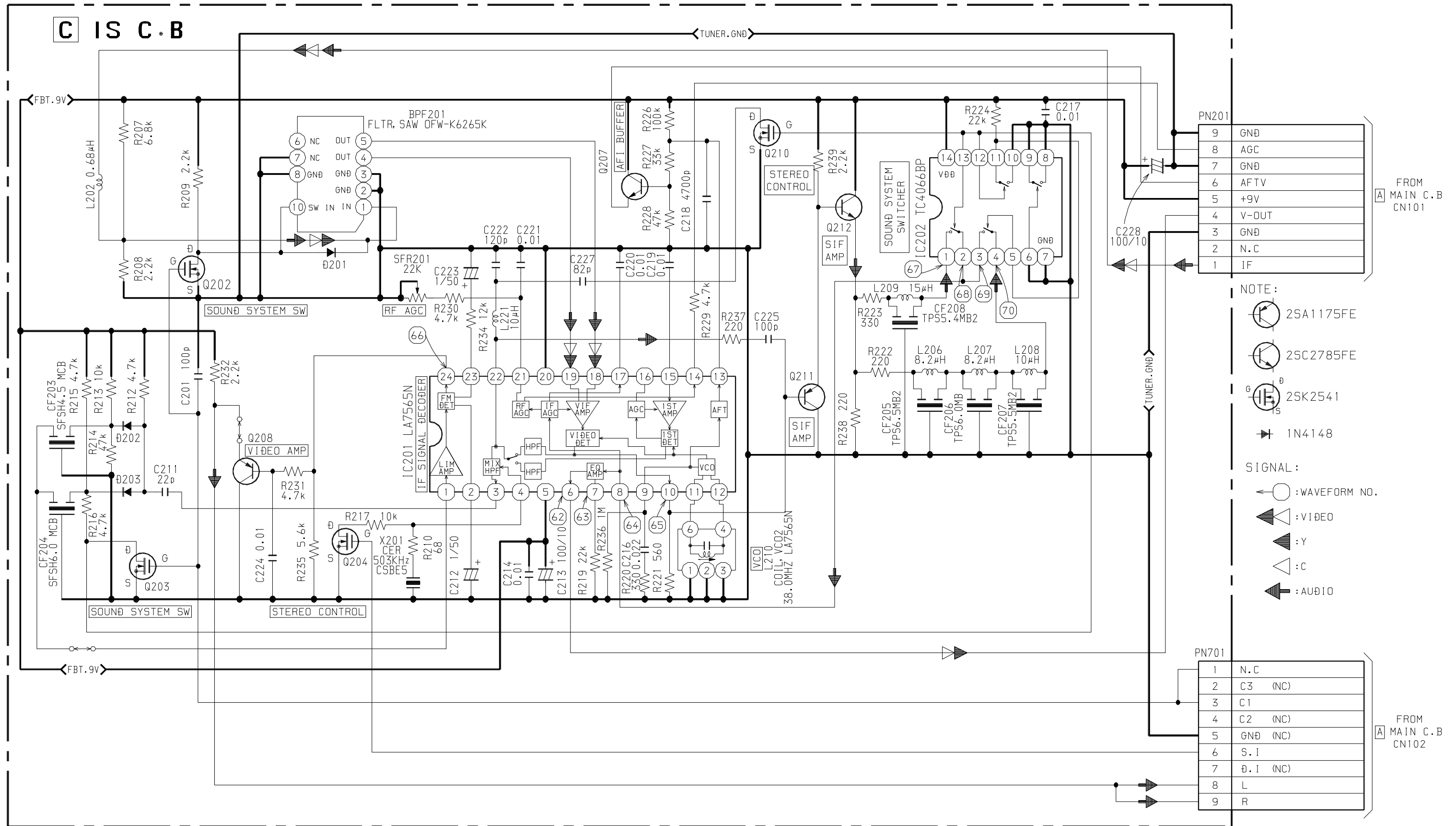
15	14	13	12	11	10	9	8	7	6	5	4	3	2	1
----	----	----	----	----	----	---	---	---	---	---	---	---	---	---

C IS C.B

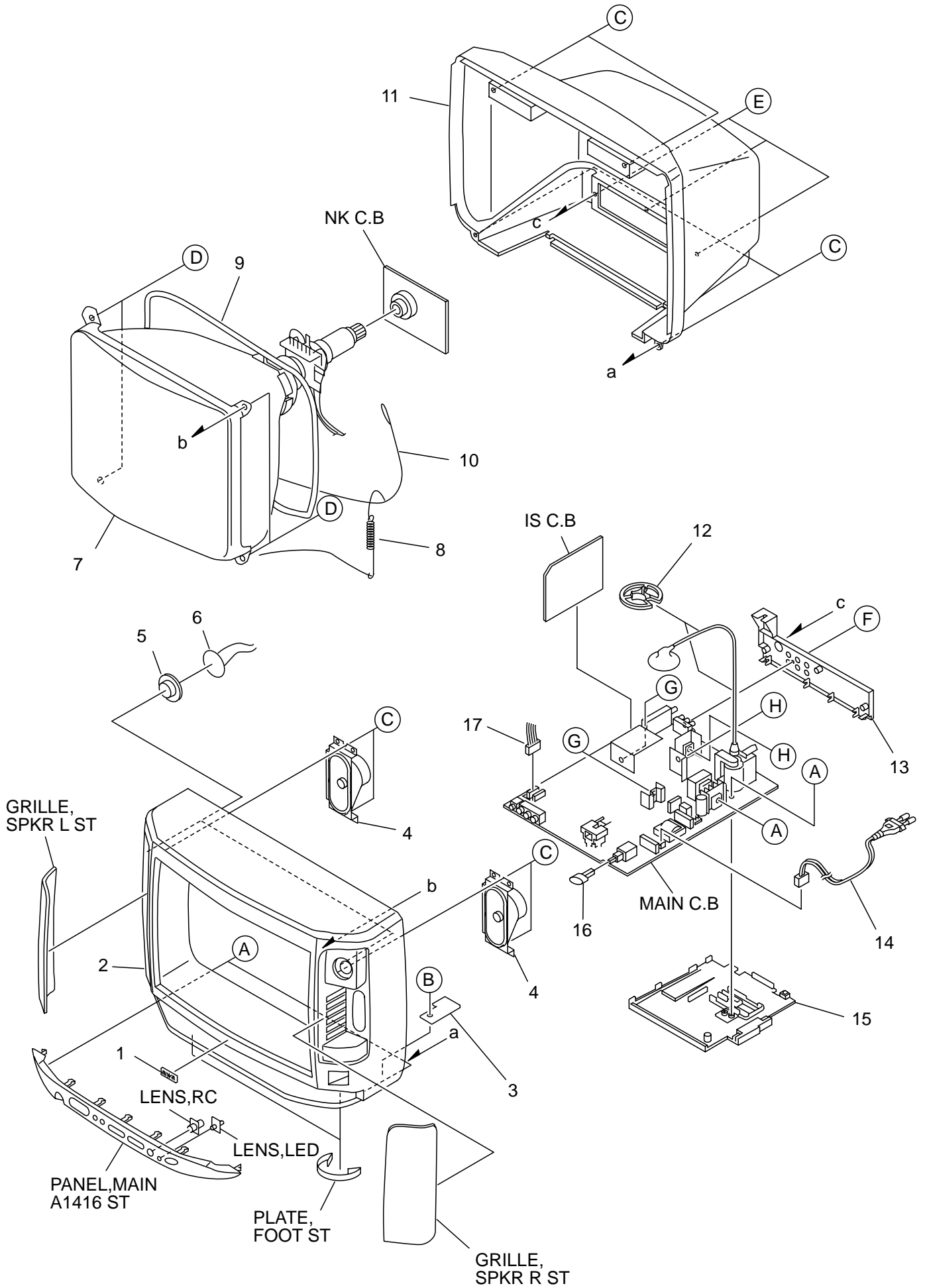


A
B
C
D
E
F
G
H
I
J
K
L
M
N
O
P
Q
R
S
T
U

SCHEMATIC DIAGRAM - 3 (IS)



MECHANICAL EXPLODED VIEW 1 / 1



# MECHANICAL PARTS LIST 1 / 1

REF. NO.	PART NO.	KANRI NO.	DESCRIPTION
1	87-054-087-010		BADGE,AIWA 40
2	87-JBA-014-010		CABI,FR ASSY A1416 ST
3	86-LBU-201-010		HLDR,AC CORD
4	87-A91-412-010		SPKR,F 4*10 8OHM 5W S0410J06
5	86-CT6-020-010		CAP, SPKR
	6	86-CT4-626-010	SPKR,T
△	7	86-LB7-606-010	CRT,A34AGT13X79N
	8	84-LB3-205-010	SPR-E,EARTH
△	9	84-LB3-640-010	DGC, 14PAL3
	10	84-LB3-693-210	CONN ASSY,1P CRT GND
	11	86-LB6-019-010	CABI,REAR EX
	12	87-A90-332-010	HLDR,SF-2001 HV CABLE
	13	87-JBA-007-010	PANEL,REAR A1416
△	14	86-LB7-694-010	AC CORD SET,KE2 BLK
	15	86-LBT-208-110	HLDR,FBT 2
	16	88-JBL-010-010	KEY,POWER ST
	17	84-LB2-632-110	CONN ASSY,4P-SP-2
	A	87-067-680-010	BVI T3+3-10
	B	87-067-758-010	BVT2+3-12 W/O SLOT
	C	87-067-844-010	BVT2+4-16 BLK
	D	87-078-203-110	S-SCREW,W5-25
	E	87-067-690-010	TAPPING SCREW, BVIT3+3-12
	F	87-067-761-010	TAPPING SCREW, BVT2+3-10
	G	87-067-584-010	TAPPING SCREW, BVT2+3-6
	H	87-067-579-010	TAPPING SCREW, BVT2+3-8

## COLOR NAME TABLE

Basic color symbol	Color	Basic color symbol	Color	Basic color symbol	Color
B	Black	C	Cream	D	Orange
G	Green	H	Gray	L	Blue
LT	Transparent Blue	N	Gold	P	Pink
R	Red	S	Silver	ST	Titan Silver
T	Brown	V	Violet	W	White
WT	Transparent White	Y	Yellow	YT	Transparent Yellow
LM	Metallic Blue	LL	Light Blue	GT	Transparent Green
LD	Dark Blue	DT	Transparent Orange	GM	Metallic Green
YM	Metallic Yellow	DM	Metallic Orange		

## ACCESSORIES / PACKAGE LIST

REF. NO.	PART NO.	KANRI NO.	DESCRIPTION
1	87-JB8-906-010		IB,SH(ERAP) A2117/2017/1416-M
2	87-JB8-953-010		RC UNIT,RC-7VT03
3	86-LB3-610-010		ANT ASSY,TV 5 SEC.(PAL)

**アイワ株式会社** 〒110-8710 東京都台東区池之端1-2-11 ☎03(3827)3111 (代表)  
**AIWA CO.,LTD.** 2-11, IKENOHATA 1-CHOME, TAITO-KU, TOKYO 110, JAPAN TEL:03 (3827) 3111